



# April's Block

## Camping Snowman

- Dark green border fabric
- Cream background fabric
- Scrap fabrics in the following colors: white, lt green, gold
- Green, blue, red, black, navy blue, gray, yellow
- 1 carrot nose buttons (optional)
- 3 star buttons
- 1- Wreath button
- 1- ½" burgundy button
- Black pearl cotton
- Heat n bond lite
- Dark brown thread for appliqué



Let's begin and make the Snowball Blocks! Scant ¼" seam throughout. Block with seam allowance will measure 14 ½" square.

From Dark green border fabric cut 2- 5 ½" x WOF

Then cut 8 – 5 ½" squares

Then cut the 5 ½" square in half diagonally to make 16 triangles.

Extra green fabric can be set aside for appliqué design if desired.

From Cream background fabric cut 2 – 5 ½" x WOF

Then cut 8 – 5 ½" squares

Then cut the 5 ½" squares in half diagonally to make 16 triangles.

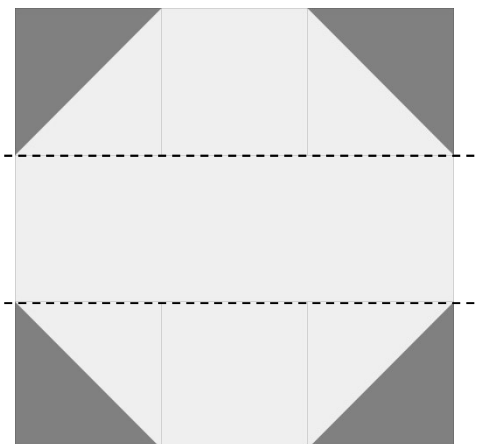
Cut 2 5 ¼" x WOF

Then cut 4- 5 ¼" x 14 ½" rectangles

8 – 5 ¼" x 5 ¼" squares

To make a Snowball Block

- Pair together 1 cream triangle and 1 green triangle and sew a scant ¼" seam along the diagonal edge. Iron. Make a total of 4 triangle square blocks.
- Following the Snowball block diagram sew the triangle blocks onto the 5 ¼" cream blocks to make a triangle block, 5 ¼" block, triangle block strip. (Make two)
- Then sew the triangle block strips to the 5 ¼" x 14 ½" cream rectangle following the Snowball block diagram.
- Make a total of 4 snowball blocks. You will only use one block this month and save the other blocks for the January, March, and April blocks.

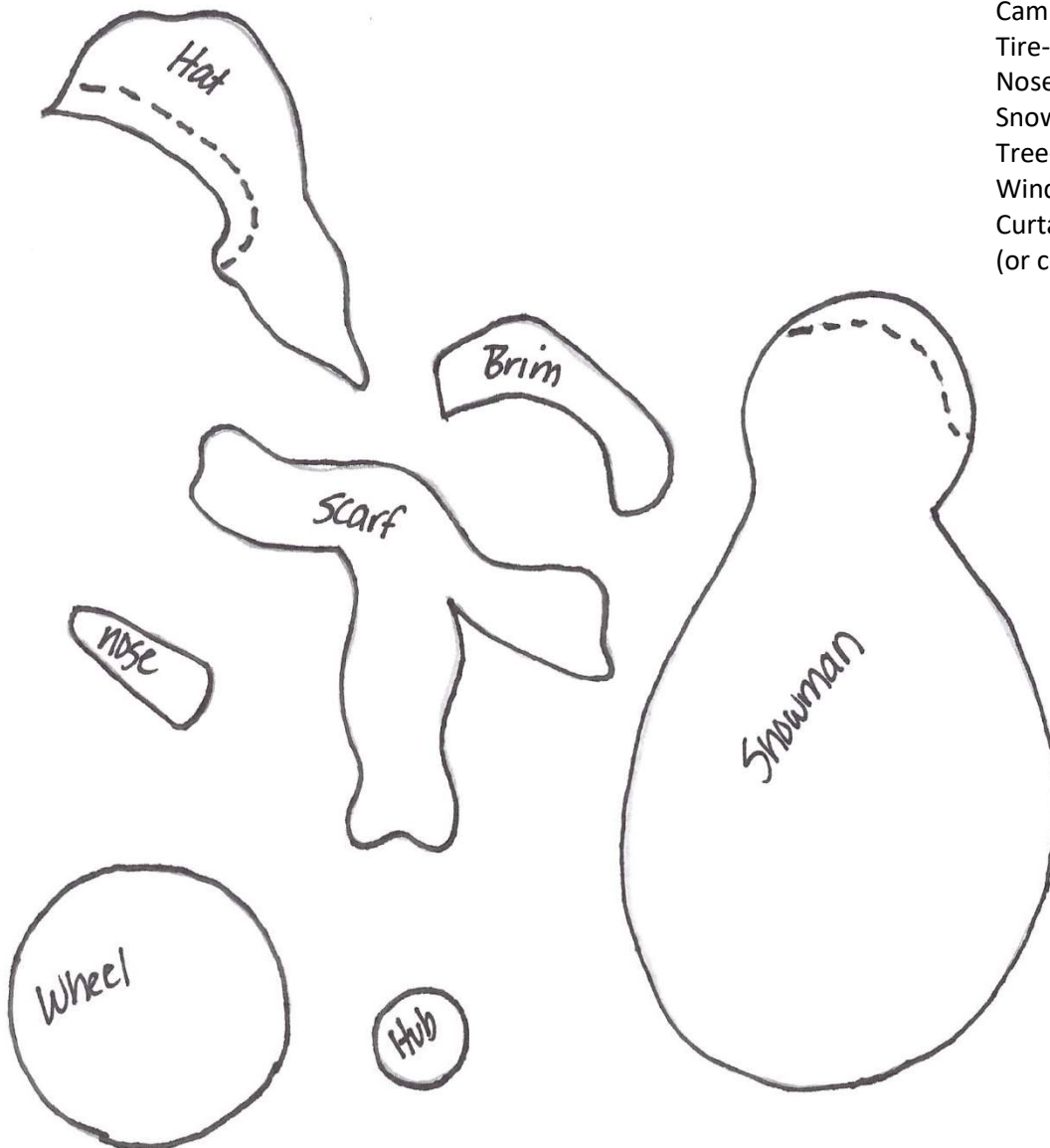


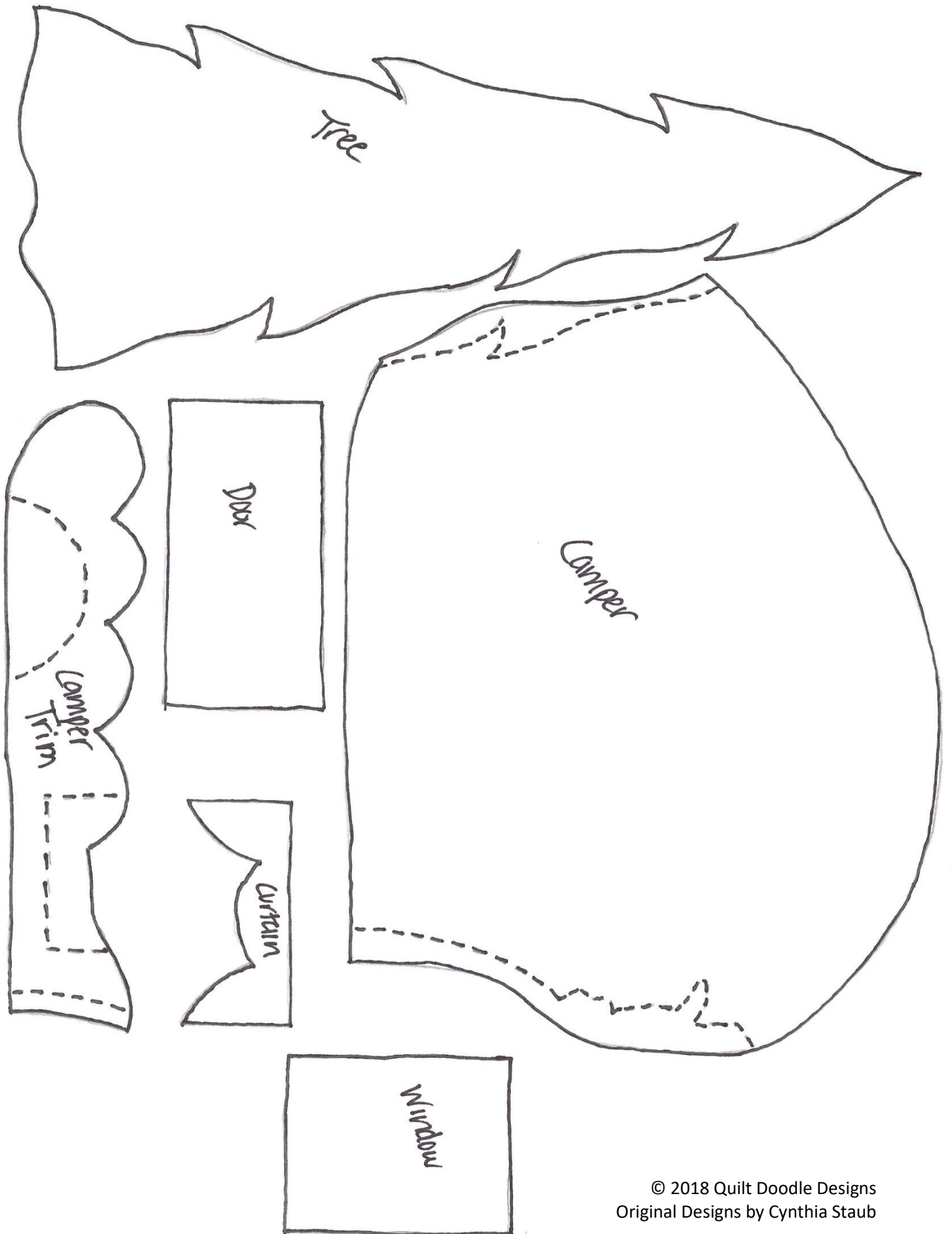
- Camping Snowman Design:** Following the instructions provided by the fusible web manufacturer, trace 1 set of the snowman design pieces grouping together pieces that will be using the same fabric. Cut pieces out. Follow the pattern placement sheet, center on cream color block background. Iron in place. Using a blanket, zig zag or satin stitch on your sewing machine; sew along the edges of all the pieces. Following the design picture. Practice on some scrap material if you are new to machine appliqué. If you prefer hand stitching you can do a blanket stitch using pearl cotton. Referring to the picture Embroider the snowman's arms. Using French knots and black pearl cotton, embroider the snowman's eyes and smile. Sew on buttons following the pattern picture for placement.

© 2018 Quilt Doodle Designs  
Original Designs by Cynthia Staub

Pattern Placement for  
Ice Fishing Snowman

Hat- light green  
Scarf- navy blue  
Hat brim- gold  
Camper- gray  
Camper trim- blue  
Tire- black  
Nose- orange fabric or button  
Snowman- white  
Tree- green  
Window- yellow  
Curtain- red  
(or colors of your choice)





© 2018 Quilt Doodle Designs  
Original Designs by Cynthia Staub

